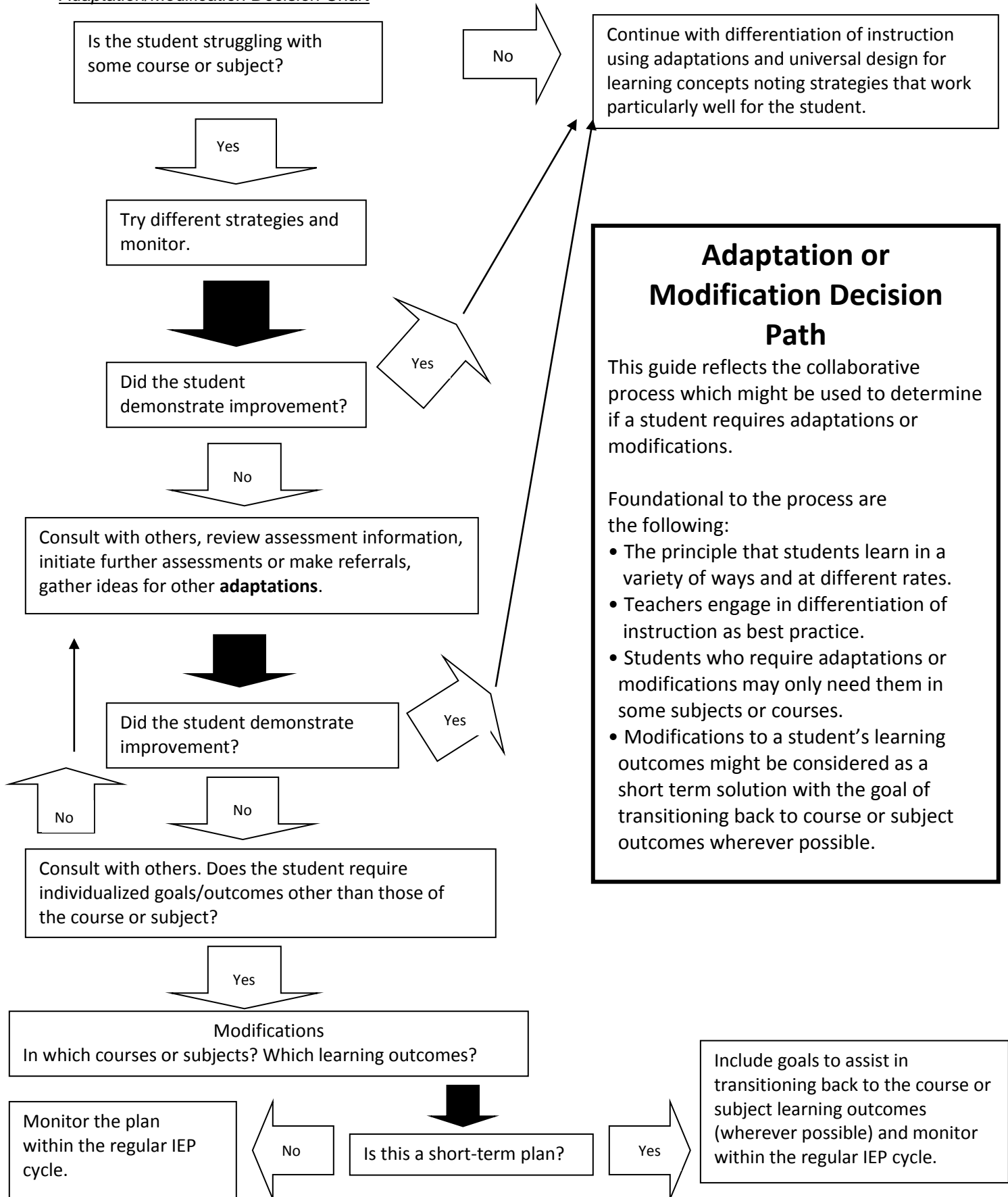


Adaptation/Modification Decision Chart



## Adaptation or Modification Decision Path

This guide reflects the collaborative process which might be used to determine if a student requires adaptations or modifications.

Foundational to the process are the following:

- The principle that students learn in a variety of ways and at different rates.
- Teachers engage in differentiation of instruction as best practice.
- Students who require adaptations or modifications may only need them in some subjects or courses.
- Modifications to a student’s learning outcomes might be considered as a short term solution with the goal of transitioning back to course or subject outcomes wherever possible.

Include goals to assist in transitioning back to the course or subject learning outcomes (wherever possible) and monitor within the regular IEP cycle.

